

FREQUENTLY ASKED QUESTIONS

COSEC

What
When
Which
Where
How
Who
Why

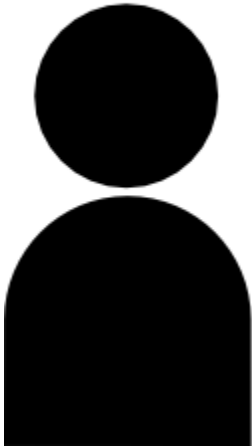


Date: 15th May, 2016

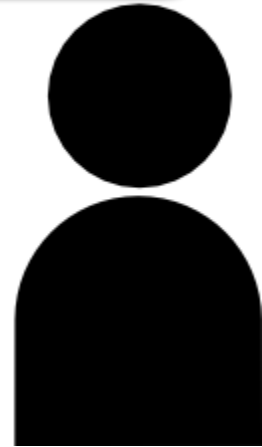
Version: V1R1

Author: Parth Kalavadiya

How to solve the error 'Login Failed' in COSEC APTA?



We have started to use COSEC APTA mobile application so that employees can track their attendance but they are getting error of log-in failed while logging in. What could be the reason?

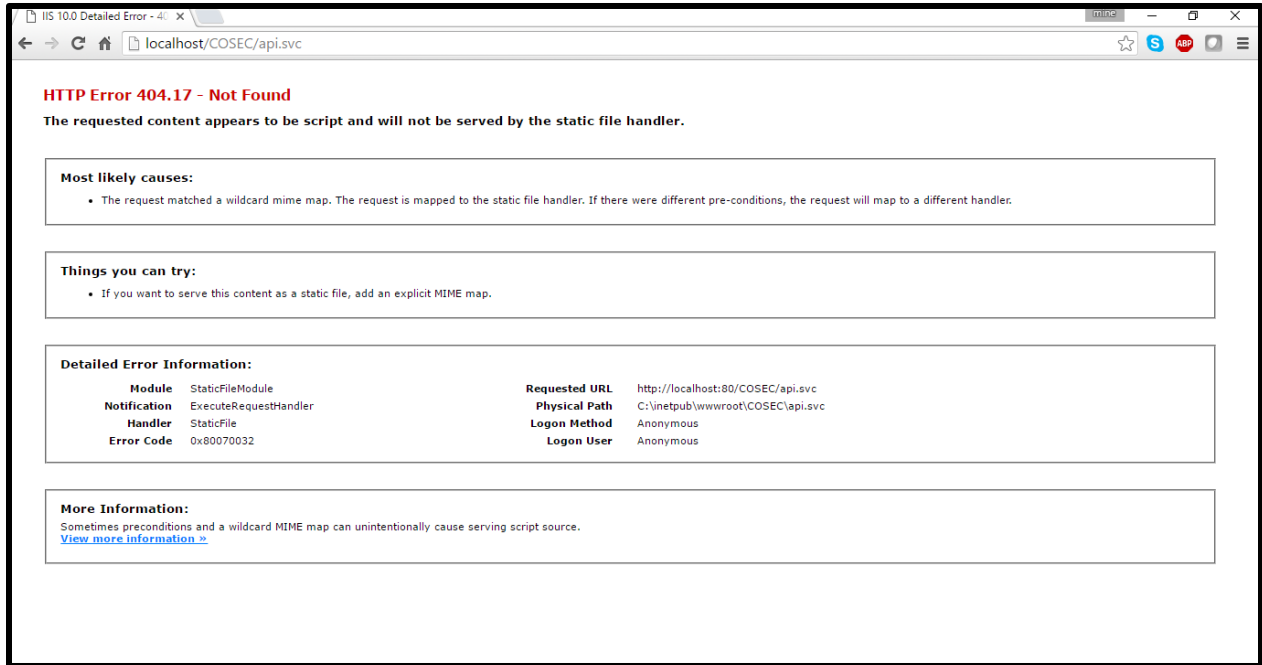


There must be issue either with IIS or with the Port. Let me check.



To check whether the issue is related to IIS, just run the API.

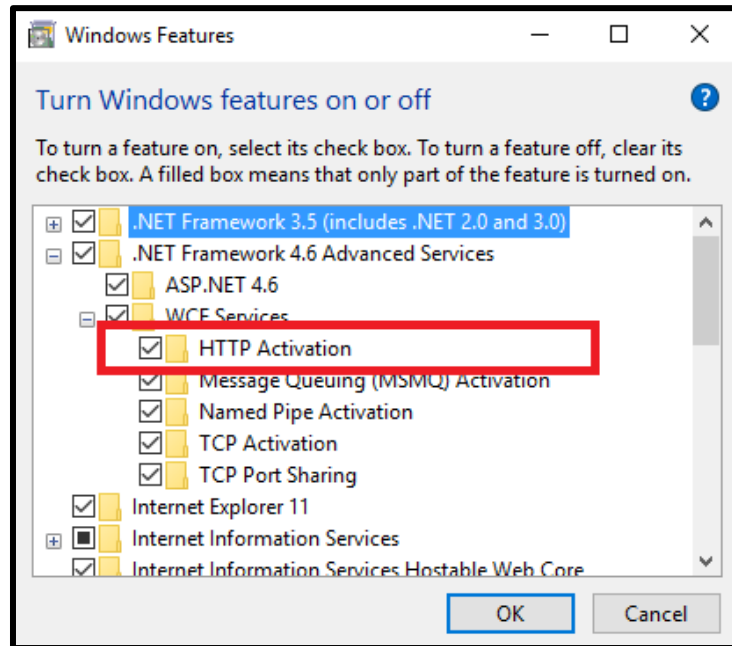
`http://servername/cosec/api.svc/v2.`



If you get the error in browser that means IIS components are not configured properly.

Step 1. Check IIS components.

Following component needed to be enabled to run the API successfully.



Now, restart IIS and run the same API.

If API is run successfully, it will ask for User ID and Password. After entering ID and password, 'Hello API User' Message will appear in browser.



Step 2: Checking Port connection:

If the port is blocked, you won't be able to login into the application.

To check whether port is open, you can visit site www.canyouseeme.org and enter your global IP Address and port. If your connection is closed, open it.

The application will open successfully after following these steps.

Disclaimer: The information contained in this e-mail and/or attachment may contain confidential or privileged information. Unauthorized use, disclosure or copying is strictly prohibited and may constitute unlawful act and can possibly attract legal action, civil and/or criminal. The contents of this message need not necessarily reflect or endorse the views of Matrix Comsec on any subject matter. Any action taken or omitted on this message is not entirely at your risk and the originator of this message nor does Matrix Comsec take any responsibility or liability towards the same. If you are not the intended recipient, please notify us immediately and permanently delete the message.