

FREQUENTLY ASKED QUESTIONS

COSEC

What
When
Which
Where
How
Who
Why



Date: 27th August, 2015

Version: V1R1

Author: Ankit Joshi

How to configure Access Route?

Being an RFID Card manufacturing firm, we need to really focus more on controlling Access of people to specific zones. We have installed Matrix COSEC. I want you to find out a way in which User should be compulsorily bounded to follow a route



Sure sir. I am aware of a feature.
Let me configure it for our use

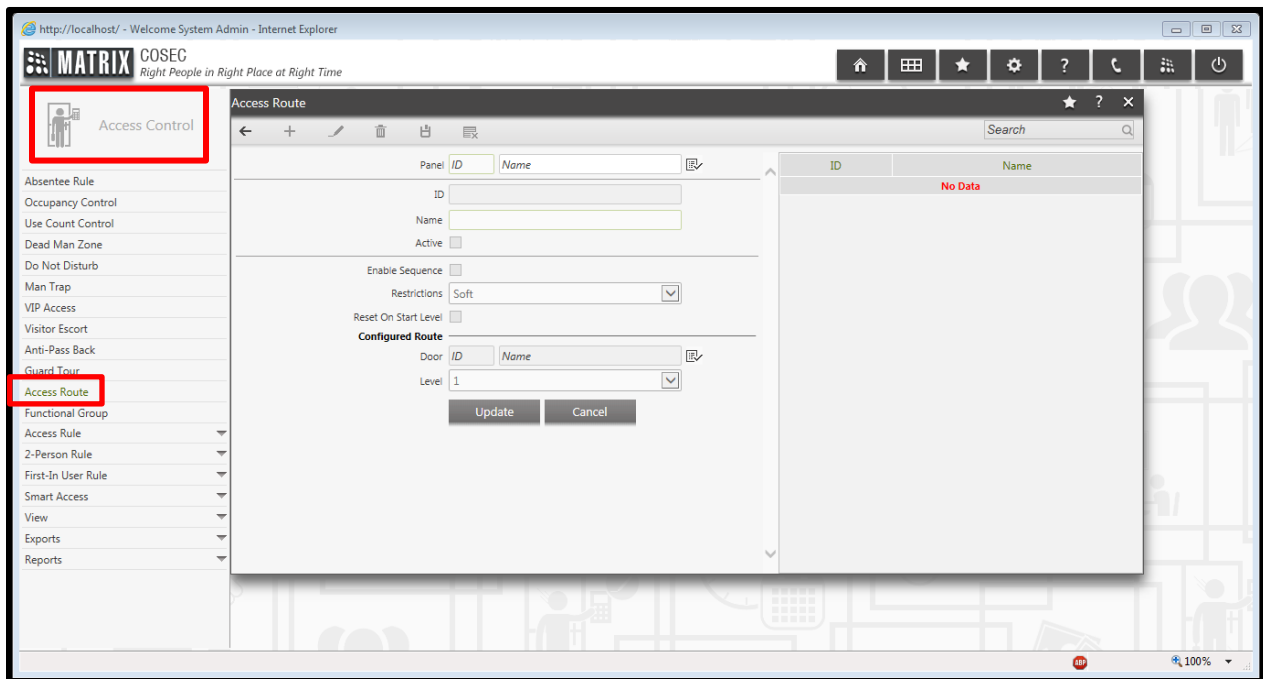


Access Route is a feature in which we can bound User to follow a route in order to gain Access



Access Route feature is available in Access Control Module → Access Route.

This functionality compulsory requires Panel Lite Doors and Exit Readers.



Select the Panel Lite Device from the pick list

Access Route

Panel 14 Panel Lite V2-Device-14

ID 1

Name Access Route 1

Active

Enable Sequence

Restrictions Hard

Reset On Start Level

Configured Route

Door ID Name

Level 1

Update Cancel

Member No.	Device ID	Name	Level	
1				
2				
3				
4				
5				

ID	Name
1	Access Route 1

Click on '+' to add a new Access Route to the Panel Lite Device

Panel 14 Panel Lite V2-Device-14

ID 1

Name Access Route 1

Active

Enable Sequence

Restrictions Hard

Reset On Start Level

Configured Route

Door ID Name

Level 1

Update Cancel

Member No.	Device ID	Name	Level	
1				
2				
3				
4				
5				

ID	Name
1	Access Route 1

Specify a name to the Access Route as required

Enable this flag, if User is to be followed route in sequence starting from lowest level

Access Route

Panel 14 Panel Lite V2-Device-14

ID 1

Name Access Route 1

Active

Enable Sequence

Restrictions Hard

Reset On Start Level

Configured Route

Door ID Name

Level 1

Update Cancel

Member No.	Device ID	Name	Level	
1				
2				
3				
4				
5				

Search

ID	Name
1	Access Route 1

Choosing Soft will allow Access to Users on violation of Access Route and these Events can be viewed in Device Module > Reports > Device Wise Events. Choosing Hard will not allow Users at all on Violation of Access Route

Access Route

Panel 14 Panel Lite V2-Device-14

ID 1

Name Access Route 1

Active

Enable Sequence

Restrictions Hard

Reset On Start Level

Configured Route

Door ID Name

Level 1

Update Cancel

Member No.	Device ID	Name	Level	
1				
2				
3				
4				
5				

ID	Name
1	Access Route 1

Access Route

Panel 14 Panel Lite V2-Device-14

ID 1

Name Access Route 1

Active

Enable Sequence

Restrictions Hard

Reset On Start Level

Configured Route

Door ID Name

Level 1

Update Cancel

ID	Name
1	Access Route 1

Member No.	Device ID	Name	Level	
1				
2				
3				
4				
5				

By enabling this flag, Access Route will get reset when User punches on Device with lowest Level

Access Route

Panel 14 Panel Lite V2-Device-14

ID 1

Name Access Route 1

Active

Enable Sequence

Restrictions Hard

Reset On Start Level

Configured Route

Door ID Name

Level 1

Update Cancel

Member No.	Device ID	Name	Level	
1				
2				
3				
4				
5				

Click on Member 1

Access Route

Panel 14 Panel Lite V2-Device-14

ID 1

Name Access Route 1

Active

Enable Sequence

Restrictions Hard

Reset On Start Level

Configured Route

Door 3 path

Level 5

Update Cancel

Member No.	Device ID	Name	Level	
1				
2				
3				
4				
5				

Select the Device and give it a Level

Access Route

Panel 14 Panel Lite V2-Device-14

ID 1

Name Access Route 1

Active

Enable Sequence

Restrictions Hard

Reset On Start Level

Configured Route

Door ID Name

Level 5

Update Cancel

ID	Name
1	Access Route 1

Click on 'Update' and the member will be added in the Table below it

Member No.	Device ID	Name	Level	
1	3	path	5	
2				
3				
4				
5				

Access Route

Saved Successfully

+

Panel 14 Panel Lite V2-Device-14

ID 1

Name Access Route 1

Active

Enable Sequence

Restrictions Hard

Reset On Start Level

Configured Route

Door ID Name

Level 11

Update Cancel

Multiple members have been added in the Table. Save the configurations.

Member No.	Device ID	Name	Level	
1	3	path	5	
2	6	ARC PAnel Door	7	
3	2	VEGA panel Door 64	11	
4				
5				



PATH Device at Level 5



ARC Device at Level 7



VEGA Device at Level 11

Access Route to be followed:



Entry on PATH Device



Entry on ARC Device



Entry on VEGA Device



Exit from PATH Device



Exit from ARC Device



Exit from VEGA Device

Device Configuration Saved Successfully

14
Panel Lite V2-Device-14
Panel Lite V2
10/25000
Active

Profile
Advanced
Features
Others
Special Functions
Input Output
Zones
Additional
Access Clusters

Set1 Set2 Set3

Absentee Rule
Enable

Occupancy Control
Enable
Default Occupancy Limit 9

Use Count Control
Enable
Default Use Count Limit (per minute) 5

Soft Override
Enable

Access Route
Enable

Block Users
Tail-Gating
Man Trap Timer Violation
Occupancy Violation
Anti-Pass Back Violation
Multiple Unauthorized Attempts
Allowed Unauthorized Attempts 3

Enable Access Route feature
from Panel Lite Features

Assign appropriate Access Route to all Users

The screenshot displays the 'User Configuration' page for user 'MAT12 Eddy Active'. The interface includes a left-hand navigation menu with 'Users' and 'Devices' highlighted in red. The main configuration area shows various settings for the user, including 'Active' (checked), 'VIP' (unchecked), 'Absentee Rule' (unchecked), 'Absent Day(s) Count' (60), 'Access Profile' (Group-1), 'Functional Group' (Staff), 'Home Zone' (Zone-1), 'Visit Zone' (empty), and 'Access Route' (Access Route 1). The 'Device' dropdown is set to 'Panel Lite V2-Device-14' and the 'Access Route' dropdown is set to 'Access Route 1'. Both dropdowns are highlighted with red boxes. A callout bubble points to the 'Device' dropdown with the text 'Assign appropriate Access Route to all Users'.



Disclaimer: The information contained in this e-mail and/or attachment may contain confidential or privileged information. Unauthorized use, disclosure or copying is strictly prohibited and may constitute unlawful act and can possibly attract legal action, civil and/or criminal. The contents of this message need not necessarily reflect or endorse the views of Matrix Comsec on any subject matter. Any action taken or omitted on this message is not entirely at your risk and the originator of this message nor does Matrix Comsec take any responsibility or liability towards the same. If you are not the intended recipient, please notify us immediately and permanently delete the message.